

SLAM100

Handheld laser scanner

Indoor Solution



UAV Solution



Handheld Solution



Backpack Solution



Product Feature

Overall parameters

Laser scanning FOV	270° × 360°
Camera FOV	200°(H) × 100°(V)
Relative accuracy	2 cm
Absolute accuracy	5 cm
Storage	32 GB(Standard)
Power supply	Replaceable battery; External power supply
External power supply voltage	20-30 V
Battery capacity	3350mAh*4
Battery duration	2.5 h
Power consumption	25 W
Operating temperature	-10°C ~ +45°C
Operating humidity	<85% RH
Weight	1588 g(Without Battery)
Size	372 mm × 163 mm × 106 mm(Without Base)

Sensor parameters

Laser class	Class 1
Laser channels	16
Maximum range	120 m
Laser pulse repetition rate	320 kHz
Echo signal intensity	8 bits
Number of cameras	3
Camera resolution	5 Megapixels
NFC	Supported

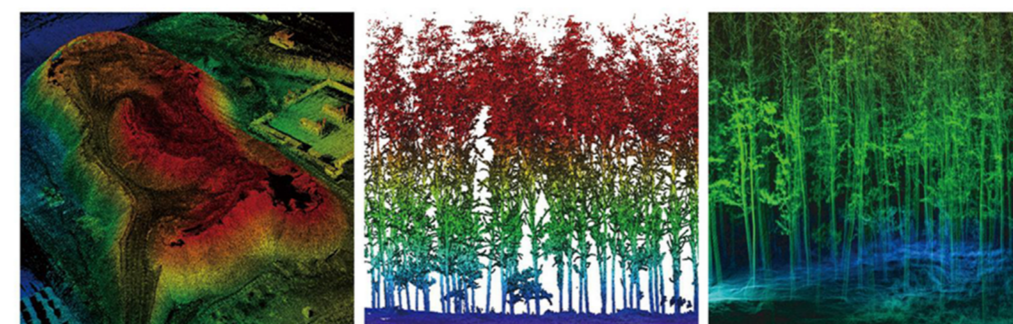
Geographic information



Topographic mapping

Karst cave and tunnel

Fundamental surveying and mapping

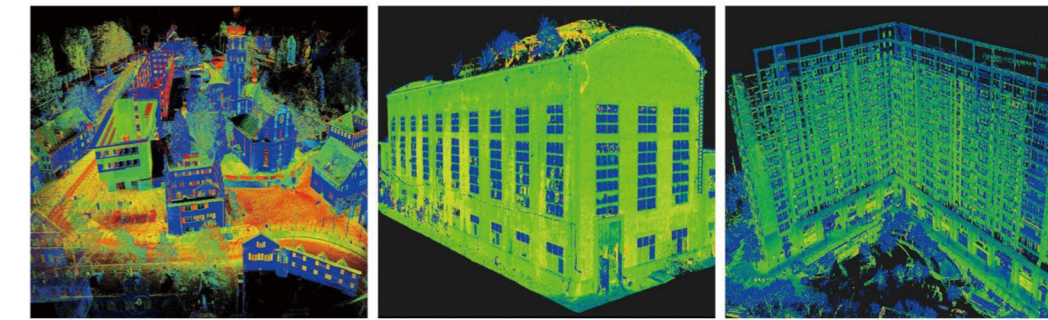


Volume calculation

Forestry investigation

Forestry investigation

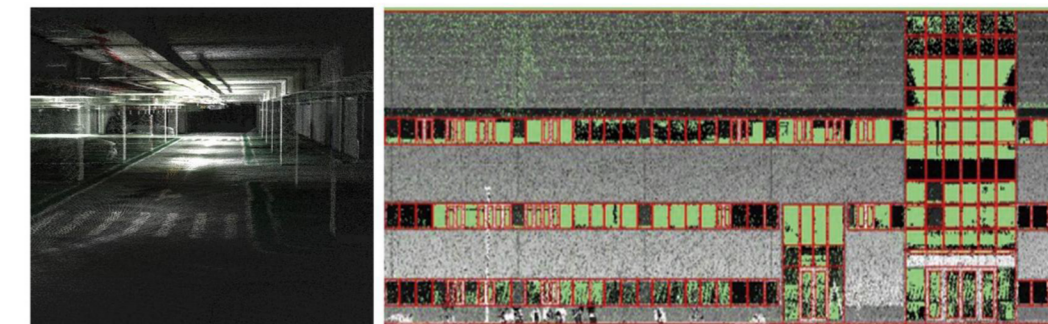
Construction property



Urban planning

House property mapping

Completion and acceptance

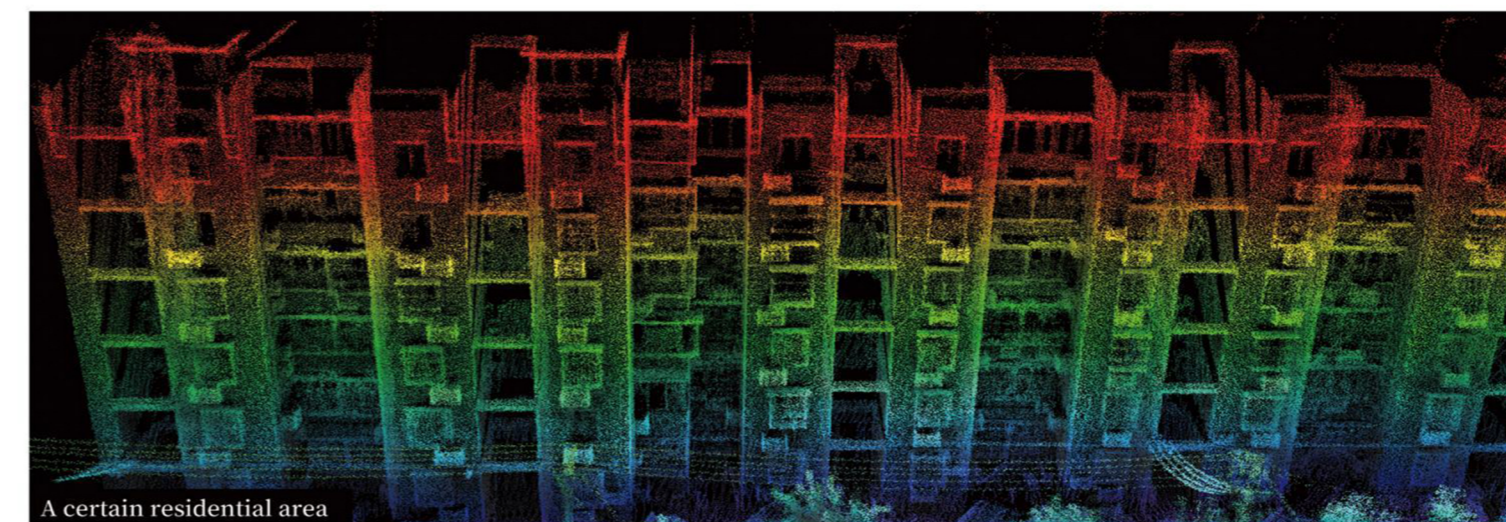


Underground space

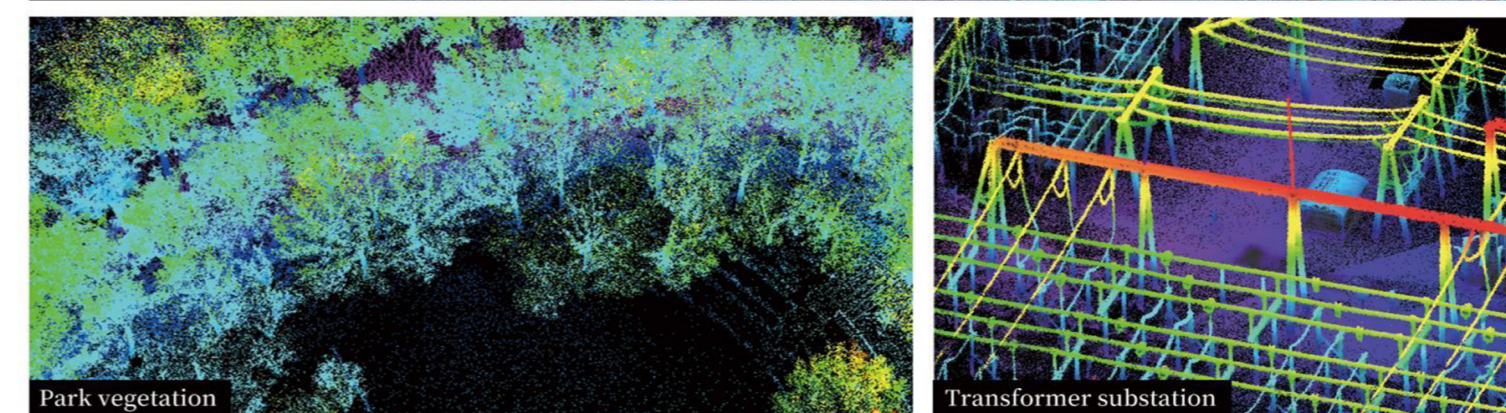
Building facade

High precision and high definition

Industry-level SLAM post-processing algorithms enable SLAM100 to obtain higher precision and finer 3D point cloud data.



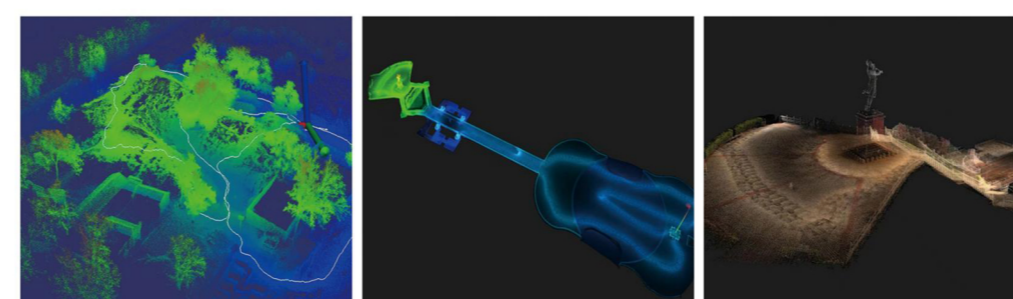
A certain residential area



Park vegetation

Transformer substation

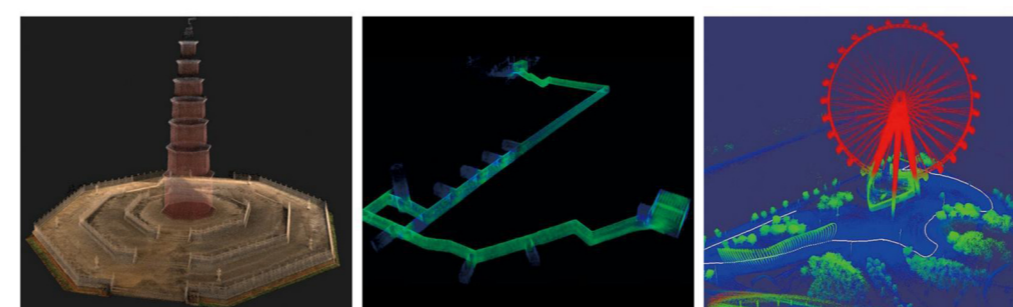
Human culture



Ancient ruins

Cultural square

Cultural square

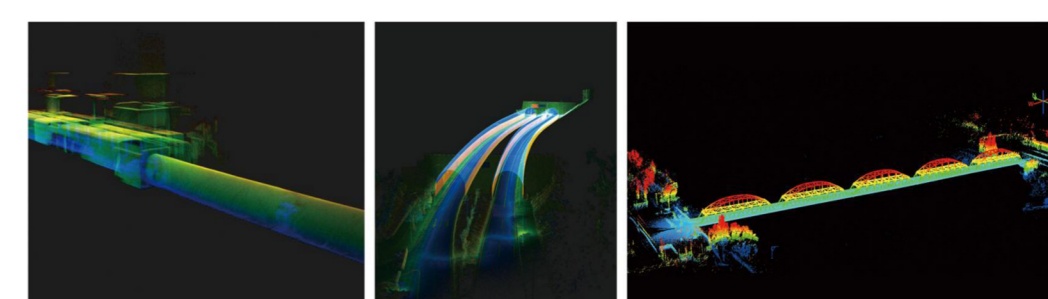


Ancient buildings

Civil air defense works

Playground

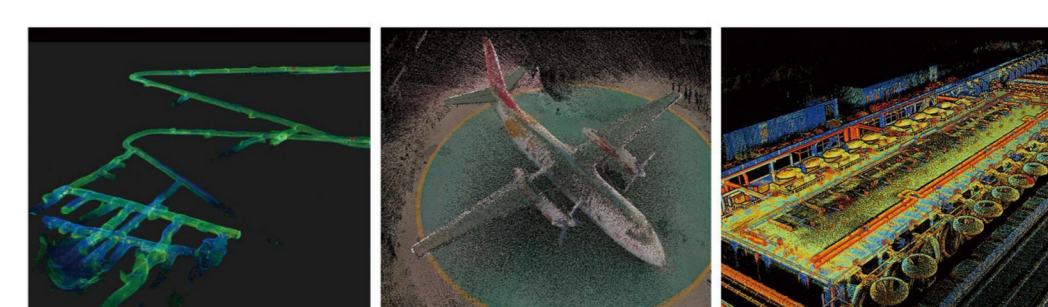
Industrial engineering



Subway

Tunnel

Bridge



Mine

Reverse engineering

Factory